

THEATRE

deBASE Productions

Presents

POPPING LEAD BALLOONS

A high-energy comic drama for teens and anyone who has survived adolescence.

Join Mel as she takes a walk down the not-so-sweet memory lane of her high school years — when bitching became an artform and the sound of a text message could mean that your whole social life was about to crumble.

A wickedly funny stand up routine, interspersed with scenes depicting school life (and social death), *Popping Lead Balloons* explores the nature of contemporary girl culture. The show examines a modern day witch hunt, taking Arthur Miller's *The Crucible* as inspiration.

Written by deBASE productions.

Popping Lead Balloons features three of Queensland's finest comic actresses: Louise Brehmer, Tammy Wheller and Natalie Trent.

"Powerful and truthful. I saw it twice and was moved both times". Sue Pearn, All Hallows' School, 2009

"Wonderful! So relevant and entertaining" Tara Richter, Millmerran State School, 2009

Community activities:

Type of activity: Workshops: "Anti-bullying" or "Creating Comic Characters"

Age activity best suited to:

"Anti-bullying" Years 7 to 10

"Creating Comic Characters" Years 9 to 12

Number of participants: 10–35

Requirements: A large, clear space

Duration: 1hr 30 mins

Cost: Price on application

Colleague recommendation:

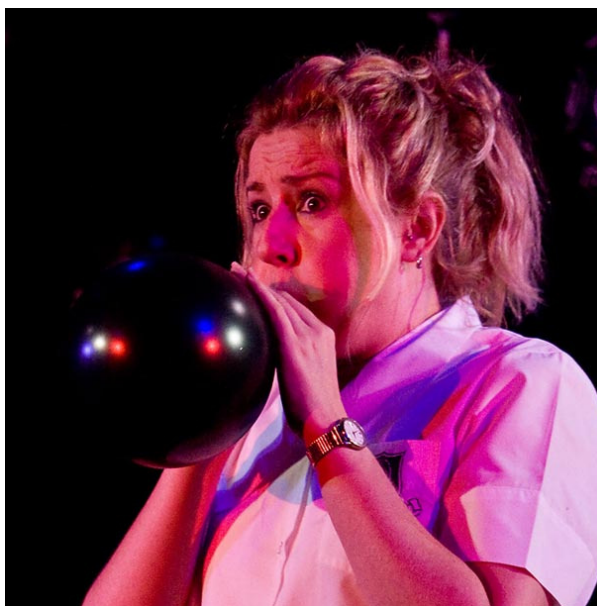
Venue: JUTE

Contact: Suellen Maunder

Phone: 07 4050 9444

Email: suellen@jute.com.au

Disclaimer: The performance fee range may change subject to the level of demand for the production.



Artist contact details:

Name: deBASE productions

Phone: 07 3221 9444

Email: debase@mail.com

Website: www.debaseproductions.com

Specifications and Requirements:

Availability: 12/07/2010 – 10/12/2010

Target audience: Secondary school age group (Years 7 to 12) to adult (parental supervision recommended for younger age groups).

Running time: 1 hour

Number in touring party: 3 artists

Bump in: 1 hour **Bump out:** 1 hour

Venue: Theatres, schools or community halls (indoor venues).

Critical issues: Sound system required (that laptop can be plugged in to).

Venue technical requirements:

Stage size 3 x 3 m.

Dressing room preferable but rest rooms are adequate.

General wash if available otherwise no lighting required.

Marketing materials:

High quality images available on request.

Professionally shot DVD (full length and trailer).

Comprehensive teachers' notes

Performance fee: \$737 to \$2,211

Performance Royalties: 10.5%